

P.O.Box 4215
East Gosford NSW 2250
Eversharp Technology Pty Ltd
ABN 26 107 409 932

Tel no: 1300 137 502
Fax: +61 2 4325 7805
2/319 Mann Street
Gosford NSW 2250

access

cable management flooring system



ECO

ECO Cable Management Flooring System Series CA-600R / CA-500R / CA-400R

The **ECO Cable Access flooring system** is ideal for new and renovated floors in offices, schools, call centres, training venues and retail areas - in fact, anywhere the routing and concealment of cables is required for operational reasons, safety or aesthetics.

The ECO raised flooring system offers several advantages over traditional cable access floors.

Benefits include:

Minimal preparation - UniPanels (refer images 01 & 02) follow the contour of your floor, therefore no levelling is required before installation;

Simplicity and ease of installation means **reduced labour costs, minimal disruption** and **less downtime**;

Accessibility - Cable trenches remain **fully accessible** following installation by raising **Flank Caps** (image 04) using a screwdriver or similar tool;

Higher Loading - UniPanels are composed of 16 sub panels and 64 built-in pedestals, offering **10x higher uniform loading** than traditional raised access flooring;

Manufactured from up to 100% recycled materials (recycled polypropylene) and **fully recyclable** at end of product life. The system has been approved and ECO Mark listed in Japan;

Retain ceiling heights - 40mm, 50mm or 60mm system heights;

Provides high capacity cabling for power, data and voice cables - all neatly concealed yet fully accessible. Accommodates **full and part-height partitions** which can be erected and fixed on top of **UniPanels** without disturbing any cable run beneath flooring (refer images 07 & 08);

Low maintenance - floor does not require any upkeep.



Images 07 & 08: Erect full or part-height partitions on top of flooring by fastening floor tracks to **UniPanels** using 12mm blunt-head screws. Installation of partitions will not interrupt the flow of cables beneath flooring.



Image 01: Sound Attenuation Blanket (inset) is laid before installation of UniPanels commences.

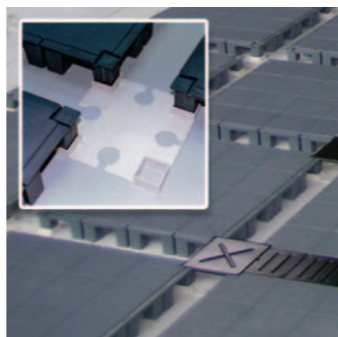


Image 02: UniPanels fit firmly into 4-way Base Connectors (inset) creating 90mm cable trenches between panels and the formation of a natural grid pattern (refer images 02 & 03) which assists installation and makes cable routing a breeze!

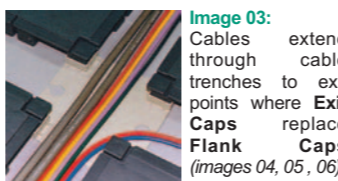


Image 03: Cables extend through cable trenches to exit points where Exit Caps replace Flank Caps (images 04, 05, 06).

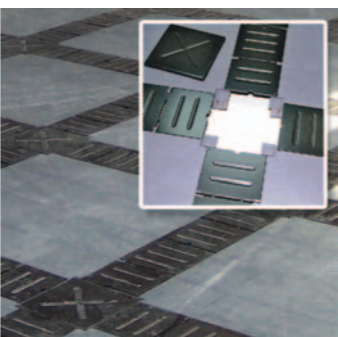


Image 04: Flank Caps and Centre Caps (inset) are fixed to UniPanels to conceal and protect cabling. Centre Caps are positioned at UniPanel junctions. Exit Caps (image 05) replace Flank or Centre Caps where required. These components can be used interchangeably.

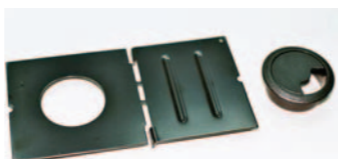


Image 05: Exit Cap & Grommet



Image 06: Cables extend through Exit Caps and floor covering at connection points

Specifications:

ECO series consists of UniPanel, Base Connector, Centre Cap, Flank Cap, Sound Attenuation Blanket and accessories:

UniPanel

Manufactured from fire resistant recycled polypropylene. Panel size:

CA-611R: 510 x 510 x 60mm (20.08" x 20.08" x 2.36")

CA-511R: 510 x 510 x 50mm (20.08" x 20.08" x 1.97")

CA-411R: 510 x 510 x 40mm (20.08" x 20.08" x 1.57")

System Height

CA-600R 60mm (2.36")

CA-500R 50mm (1.57")

CA-400R 40mm (1.57")

Cable Trench Width

90mm (3.54")

90mm (3.54")

90mm (3.54")

Trench Clearance

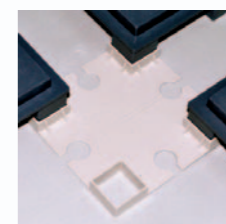
55mm (2.16")

45mm (1.77")

35mm (1.37")



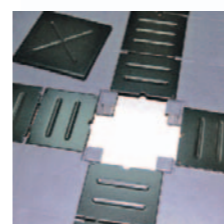
UniPanels



4-Way Base Connector



Flank Cap



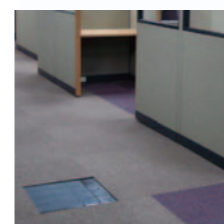
Flank & Centre Cap



Sound Attenuation Blanket



Starting Cap



Base Connector:

Size 169 x 169 x 15mm (6.65" x 6.65" x 0.59"). Manufactured from recycled polycarbonate plus ABS.

Centre Cap:

Size 148 x 148mm (5.82" x 5.82"), 2.3 mm (0.09") thick steel, reinforced ribs, corrosion resistant, black

Flank Cap:

Size 223 x 119.7mm (8.78" x 4.71"), 2.3 mm (0.09") thick steel, reinforced ribs, corrosion resistant, black

Accessories:

Ramp, Starting Cap, Edge Rail, Aluminum Ramp Rail, Exit-Cap, Edge Trimmer

Suitable floor coverings for ECO Cable Access:

Commercial grade carpet and vinyl tiles (min. thickness = 4.5mm), or Ecotile's standard interlocking floor tiles - visit www.ecotile.com.au to view our range. **Note:** marble, granite and wood are not recommended.

Tests:

Fire Resistance

UniPanel: Meets *NFPA 253 class A rating* tested in accordance with *ASTM E-648 Critical Radiant Flux*. Meets *BS 476, Part 7, B2*.

Centre Cap: non-combustible; **Flank Cap:** non-combustible

Concentration Load:

Tested in accordance with *ASTM E-196 (2" plate)*

UniPanel CA-611R: 400 kg < 2.5 mm depression

UniPanel CA-511R: 360 kg < 2.5 mm depression

UniPanel CA-411R: 360 kg < 2.5 mm depression

Centre Cap: 300 kg < 2.0 mm depression

Flank Cap: 300 kg < 2.0 mm depression

Concentration Ultimate Load:

CA-611R UniPanel > 700 kg

CA-511R UniPanel > 600 kg

CA-411R UniPanel > 600 kg

UniForm Ultimate Load:

CA-611R UniPanel > 200 psi

CA-511R UniPanel > 150 psi

CA-411R UniPanel > 150 psi

Warranty:

5 year warranty - except when product is subject to abuse, negligence, abnormal use and/or is not installed in accordance with Ecotile's recommendations.

To view accessories and installation instructions, please visit our website www.ecotile.com.au. For more info phone toll-free 1300 137 502



100% recyclable

cable management

cable management